

# [Glenunga news]

## Contents

Principal's Report	Pg 1
Senior School Report	Pg 3
Middle School Report	Pg 4
International Education	Pg 4
Oriental Pearl High Student Exchange	Pg 5
Digital Education Revolution	Pg 5
Christian Pastoral Support	Pg 6
Request for Host Families	Pg 6
Yr 8 Camps	Pg 6
Yr 8/9 Orientation Day	Pg 7
National Youth Science Forum	Pg 7
GIHS Sport & Student Life	Pg 7
Yr 10 Melbourne Discovery Trip	Pg 7
Student Congratulations	Pg 7
Victorian Bushfires	Pg 8
Tour Down Under	Pg 8
Yr 8 Camp, Yr 8/9 Orientation Day Photos	Pg 9

## UPCOMING EVENTS

### February

- 21 IGNITE Assessment
- 24 Middle School Swimming Carnival
- 26 Interschool Swim Carnival  
E Grade 9 – 12.30pm

### March

- 6 Yr 8 Heats Day
- 9 Adelaide Cup Public Holiday
- 10 - 16 Hosei Study Tour
- 16 Governing Council AGM 7pm

### ADVANCE NOTICE

### April

- 8 OPEN DAY – Early Dismissal  
1.30pm
- 19 Sports Day
- 25 Yr 8 Student Parent Teacher Conf  
4 – 6pm

Glenunga International High School  
Annual General Meeting  
Monday 16 March 2009

6.45 pm for 7.00 pm start  
In the Performing Arts Centre  
All welcome!

RSVP to Eleni Dalkos by 6 March 2009  
([eleni.dalkos@gihs.sa.edu.au](mailto:eleni.dalkos@gihs.sa.edu.au)  
or phone 8379 5629)



## Principal's Report

Welcome to our first newsletter for 2009. We are emailing newsletters home to families to strengthen our home-school communication. For families that don't have an email address we will post newsletters home. Please help us to save money and trees by forwarding your email address if we don't already have it. Let Student Services know if you change your email or if you connect.

Despite the trying weather conditions we have had a great start to the school year. Over three hundred people attended our Year 8 Parent Information evening last week and our Celebration Assembly last Friday acknowledging all the great achievements of our students was a resounding success. We are delighted with the excellent standards demonstrated by our students in their commitment to work, attendance, behaviour and dress.

## Hot Weather Policy

Apologies to parents who looked on the website for a policy related to hot weather. Governing Council approved the newly developed policy at the February meeting pending consultation with staff. It will be posted on the site soon.

## Issue 1, 24 February 2009

As our school is air conditioned - except for several classrooms - **we do not dismiss early on hot days, but we do support students' wellbeing in a range of ways.** Students in non-air conditioned classrooms are moved to alternative spaces; air conditioned spaces are available at recess and lunchtimes for students; Year 11 and 12 students with last lesson supervised study are allowed to sign out and go home; and physical activities and excursions are risk assessed and modified accordingly. Please send your son/daughter to school confident in the knowledge that appropriate care will be taken.

While the Year 8 camps and the Year 9 Orientation Day were managed in an exemplary manner we have taken a decision to not take groups of students on excursions into the hills area in the early months of the year. We are also exploring alternative sites for the Year 8 camps.

We are delighted to see a number of our boys wearing the grey shorts that are part of the uniform and would like to encourage more boys to do the same. The Uniform Committee this year will look at refreshing the uniform and will take into account comfort requirements due to the heat.

## Late Start Wednesday Morning

We have now experienced four weeks of this timetable innovation. Staff have spent two weeks in whole staff briefings about the potential for using learning technologies to improve student learning outcomes and seeing colleagues demonstrating

the possibilities. Each Learning Area Team and each individual staff member has documented how they are going to deliver on the three whole school expectations. These are:

- **Using technology to deepen and / or enrich learning and thinking**
  - Use of HOTS built into every assessment task and technology used to support this type of task (researching, compare and contrast, analyse)
  - More authentic learning ie not just talking about it, but doing it through virtual experience / expertise, subject specific technology (Inventor, GIS)
  - Using students' technology eg mobile phones / cameras, IPODs and support tools eg SmartBoard, video cameras for hands on learning.
- **Using technology to create a 'virtual learning environment' and social network to support 'anytime' learning**
  - Assessment plans, tasks, rubrics, exemplars on line
  - 'Chatroom' or 'sandpit' (MAC) for questions and answers from students and teacher
  - Work submitted and corrected on line.
- **Using technology to enable students to have increased choice about how they learn, what they learn and where they learn**
  - Range of choices of subject offerings
  - Students able to learn more at their own pace and to catch up missed work
  - Determine what needs to be delivered F2F no longer being the only form of delivery while still valuing the importance of the teacher factor.

Year 8 – 10 students who arrive at 8.30 are being supervised in the Resource Centre while Year 11 and 12 students are working in the Senior Study Centre. We are still negotiating with the bus company about a Hills bus run to arrive at 9.50. Wherever possible please ensure your students arrive at 8.30 or at 9.50. The canteen is open 9.45 – 9.55 for students.

### **SACE and IB Results**

We are very proud of the fact that **one student in four eligible for a TER achieved a score above 90 and one student in two achieved a TER above 80**. This is very impressive considering we had 231 students undertaking SACE or IB and the majority were eligible for a TER.

In SACE four students scored 5 'A' grades, 12 scored 3 'A' grades, 16 scored 2 'A' grades, and 50 scored 1 'A' grade. There were also 4 perfect scores (20/20).

In IB the number of candidates awarded a perfect score increased from 2007 to 2008. In 2008 there were 27 perfect scores. 1 student received 5, 3 students received 3, 4 students received 2 and 5 students received 1. There were 26 IB Dip perfect scores in 2007. The World IB Average Points score out of 45 was 30.54, Australasia was 33.62, and Glenunga was 34.0.

We would particularly like to congratulate **Ho Cheer Lam our SACE DUX of School who scored perfect 20s in 4 subjects and Callum Deakin our IB DUX**

**of School who achieved perfect scores in five subjects.**

### **Digital Education Revolution (DER)**

We have been extremely fortunate that as a Round 1 school we have taken delivery of over 400 additional computers. We have had to spend countless hours and many school dollars creating the technological environment to enable this capacity and to sustain students working on laptops in a wireless environment anywhere in the school. The next step is ensuring that all teachers are equipped with laptops and that students can bring their laptops or net books to school. Please see the details on page 5 & 6.

### **Building The Education Revolution (BER)**

As part of the Federal Government's economic stimulus package all schools' will receive a grant to upgrade their physical structures and secondary schools will be able to engage in a competitive bidding process for Science and Language facilities. Bruce Guerin, Felicity Playford and myself attended the Premier's briefing on Tuesday and we are now awaiting further details from the Commonwealth. We are very excited about the possibilities. More information in the next newsletter.

### **New SACE**

Our current Year 10 students will be the first cohort of students to undertake the new SACE (previously known as futureSACE). As part of the preparation they will undertake a Personal Learning Plan and a Personal Project in 2009. **Each student has been issued with an information booklet about this new statewide curriculum framework.** Please read the booklet and discuss it with your son or daughter. Information evenings will be available later this year.

### **Personal Project**

All Year 10 students will undertake a Personal Project in either Semester 1 or 2 as part of our preparation for new SACE. In 2011 all Year 12 students will be required to undertake a very similar subject know as a Research Project and will need to get a 'C' grade or better in order to receive their SACE certificate. The Personal Project is a dress rehearsal for the skills required. It also provides an important opportunity for each student to get involved with a topic that they are really passionate about. They will demonstrate their learning journey and the development of their capabilities over the semester. We know that this passion in one area of learning can spill over into other subjects and increase the intensity of students' engagement.

### **Personal Learning Plan**

This is a really important aspect of the new SACE. It supports personalised learning for students by getting them to look at their strengths and to develop strategies for improvement. It supports students charting their pathways through school and beyond. It also supports each student to develop five important capabilities (see booklet referred to above for info) that will equip students to succeed in this aspect now and in the future. A 'C' grade or better is required in order to be eligible for a SACE certificate.

## New Staff

We have welcomed the following staff back to our school this year:

<b>Liz Basuki</b>	LOTE / English
<b>Michael Smerd</b>	English
<b>Sue Flynn</b>	LOTE
<b>Mal Quorn-Smith</b>	Technology
<b>Joe Scalzi</b>	S & E
<b>Richard Waugh</b>	ESL/ISEC/S & E
<b>Liz Szczepanowski</b>	Science/ Maths
<b>Christina Tedesco</b>	LOTE / English
<b>Janette Pearce</b>	Home Economics
<b>Rachel Abercrombie</b>	English / Arts
<b>Kate Ward</b>	HPE
<b>Naomi Clare</b>	SL / ISEC
<b>Lyndal Vincent</b>	ESL / ISEC
<b>Ian Groom</b>	Maths / Science
<b>Virginia Snoswell</b>	Science / Maths
<b>Julie Bland</b>	Science / Maths
<b>Roger Fabray</b>	Maths
<b>Julia Danvers</b>	Resource Centre
<b>Belinda Ryan</b>	SSO Student Services
<b>Teresa Sorgini</b>	SSO Finance
<b>Susan Vercoe</b>	SSO Res Centre/ Curric
<b>Sue Lim</b>	SSO Special Ed
<b>Michelle Kemp</b>	SSO Special Ed

We have welcomed the following staff who are newly appointed to our school this term:

<b>Con Matsouliadis</b>	SACE Coordinator/ Yr 12 Year Level Leader/ Chemistry/Science
<b>Maryanne Luitjes</b>	Chemistry / Science
<b>Doru Francu</b>	PE
<b>Casper Buisman</b>	Maths
<b>Ben Miels</b>	Technology
<b>Rob Thomas</b>	Technology
<b>Martin Baker</b>	PE / Science
<b>Bron Jones</b>	SSO Finance Manager
<b>Craig Rainsford</b>	Sports Director

## Concerns

We encourage families to email us about any concerns and we will respond to you within a working day. We may need to take more time to follow up the details. If you don't get a response within that timeframe it may be because our system sometimes rejects incoming mail without necessarily letting the sender know. If you haven't heard please email [eleni.dalkos@gih.s.sa.edu.au](mailto:eleni.dalkos@gih.s.sa.edu.au) and she will follow up. If there is no response after 24 hours please ring the school on 8379 5629. Email works better than phone message because of teachers' commitments during the school day.

We have included a Contacts List with the newsletter to enable you to know who to contact. The first person is your son or daughter's Home Group teacher (Year 8 – 11) or Student Adviser (Year 12) or their subject teacher. If the issue is still not resolved then contact the Year Level Leader. Please contact me if it is a concern about the quality of teaching.

Remember if you are happy with what is happening for your son or daughter please tell everyone. If you are

unhappy please tell us and we will work with you to resolve the concern.



Wendy Johnson Principal

## Senior School Report

### SENIOR SCHOOL ORIENTATION DAY

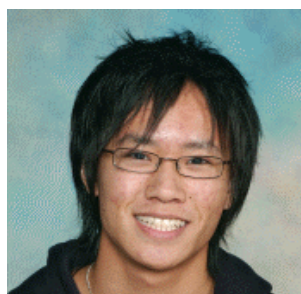
Year 11 and 12 students visited Flinders University to participate in a range of activities designed to provide students with information about a range of pathways into post secondary education.

Students chose from over 50 possible workshops including university, TAFE and employment options. Many students reported that the workshops were useful. The key note speaker Dr Kirrily Smout an educational psychologist provided students with practical strategies to improve their study habits and increase motivation. Our former students Shaez Mortimer (studying Law at Flinders) and Callum Deakin offered some tips on how to survive Year 12 and be successful.

Flinders Uni representatives commented on the excellent behaviour of our students. Thank you to Eleni Dalkos, Lois Haska, Julie Humphreys, Lyn Hayano, Marie Shane, Con Matsouliadis and Anne Walker who organised this very successful day.

### DUX of SCHOOOL

Congratulations to Ho Cheer Lam and Callum Deakin who were awarded the SACE and IB Diploma Dux of School respectively for 2008 at our Celebration of Achievement Assembly (Friday 13 Feb). Ho Cheer Lam



Ho-Cheer Lam  
SACE DUX 2008

received the award for scoring perfect 20s in Maths Studies, Specialist, Physics and Chemistry. His TER was 99.85. Callum achieved perfect scores in five subject areas and was awarded a TER of 99.95 which is the maximum score possible under this system. Both thanked their teachers in their speeches at the assembly and indicated that immersing themselves in the fullness of school life enabled them to enjoy school more and to work more effectively. They also stressed the importance of remaining resilient in Year 12 when at times it can students can feel overwhelmed by the high workload. Both indicated that they believed working consistently from week one term one was essential for success. We wish them well in their studies in the future in Engineering (Ho Cheer) and Law (Callum).

**CONGRATULATIONS**  
Callum on winning the  
prestigious Hawker  
Scholarship at the  
University of Adelaide

*Callum Deakin*  
IB DUX 2008



### CHANGES to YEAR 12 ASSESSMENT PROCESS

This year we are trialling a different process in Year 12 to better support student learning. In recent years if students did not complete work by the deadline we sent home a letter to inform parents that this has occurred. Parents and students told us that this was counter productive because the student had already received a zero and little could be done to help them to achieve a successful outcome.

Subject teachers will now be asked to set progress markers before the assignment deadline. Students will be required to demonstrate that they have done enough work to meet the deadline. If the student has not completed the required work then he/she will be required to work in the Focus Room until the necessary work is completed. Parents will be contacted as a part of this process. Three lessons in the Focus Room will trigger a parent teacher student conference and an examination of alternative pathways.

### YEAR 12 STUDENT ADVISORY MEETINGS

Last year we introduced a structure where Year 12 students were not required to attend morning Home Group sessions. We will continue to use this system. It is compulsory for students to attend the Extended Advisory Group Meeting every Tuesday as well as the first and last week of term. They are also required to attend individual meetings scheduled with their Student Adviser. At these meetings students show evidence of their study and assessment plans. Advisers will track student performance and attendance and offer appropriate advice. Please contact your daughter or son's Advisory Teacher if you have concerns or questions.

### ASSESSMENT PLANS

All students Year 8 to 12 will receive Assessment Plans for every subject that they study. These plans provide information for students and parents on what is to be assessed in the course and when it will be assessed. Please ask your son or daughter to show them to you and use them for discussion on the young person's progress.

*Jeremy Cogan Deputy Principal / Head of Senior School*

## Middle School Report

Welcome to the Middle School. The beginning of any school year brings much excitement and anticipation for students and their families. This year is no exception with a modified program for the first week designed to provide a smooth transition for students to their new

year level. Pastoral Care time was increased for all Home Groups with the Year 8 students particularly enjoying a slightly earlier dismissal for recess, lunch and end of school day. The first week also provided an opportunity for every student to meet their subject teachers and to participate in the selection of student 'House' leaders for 2009. I must commend the Year 8 students and their families for their preparation and co-operation for the start of the school year. The Mylor camps and the Year 8 Parent Information Evening were two significant and successful occasions.

The extreme hot weather conditions during our Orientation Day made it challenging for all involved. Thanks to our talented Middle School Year Level Leaders: Julie Humphreys, Jonathan Turland, Gennaro Marino and their teams for ensuring the success of the day.

The SACE Board of South Australia has produced a new booklet for students in Year 10 to provide them with further details of the new SACE and options available to students from this year onwards. The aim of this communication is to build on the information provided in the Year 9 parent brochure distributed in August last year. It would be useful for parents to read the new SACE booklet which has been distributed to our students.

Finally, if you have any concerns please email or phone the Home Group teacher, Year Level Leader or myself.

*Steve Stylianou Assistant Principal / Head of Middle School*

## International Education

We have just welcomed 31 new international fee-paying students to our school. Most of these have joined the Intensive Secondary English Course. Ten students come to us for a short-term study experience from our Japanese sister school, Kita Otsu Senior High School. Later this month we will welcome two German exchange students: Magdalena Grafen Hoyos and Ann-Kathrin Wehfritz whose Glenunga exchangees are Stella Naylor and Imogen Stefan-Rasmus.





### International Excursions

Our proposed trip to India in April will not go ahead as DECS was unable to approve travel given recent circumstances so we have worked furiously on an alternative community service option for 2009. Our revised trip will be to Vietnam and Cambodia.

Plans are well underway for our trips to France and Japan in October and preliminary information has been given to students who have expressed an interest. It is not too late to join so see Ms Ayling (France) [jay.ayling@gihs.sa.edu.au](mailto:jay.ayling@gihs.sa.edu.au) or Ms Chartres (Japan) [vicky.chartres@gihs.sa.edu.au](mailto:vicky.chartres@gihs.sa.edu.au) for information.

### Study Tour – Hosei High School

Our first study tour group for 2009 is arriving in March and we are in need of families to host a male student for one week (10/3/09 – 16/3/09). We have eight boys to be placed. This is a great opportunity to have a short cultural exchange experience! If you are interested in hosting one of the students or if you would like any further information please contact Margaret Munday or Lyn Hayano in the International Student Program office on 8338 9796.

### Would you like an overseas exchange?

I have had two contacts from students overseas asking for exchanges with GIHS students. I am offering the possibility of an exchange experience to our students on a reciprocal basis. Leo is a 16 year-old student from Germany who would like to spend the second half of this year studying at Glenunga. Eirini is a Yr 10 student from an IB school in Greece. She wants to come here for 3-4 weeks in August/September. Both are happy to host in return. If you are interested and want to know more please contact Lyn Hayano at [lyn.hayano@gihs.sa.edu.au](mailto:lyn.hayano@gihs.sa.edu.au)

*Lyn Hayano Assistant Principal  
International Student Program*

### Oriental Pearl High Student Exchange

Last year Kelsey Seyfang, Ms and Mr Purvis and I went to China. We attended a Chinese school for a period of about a month. In this month we faced lots of personal challenges and I believe we have all come back to Australia as different people.



As Australians we are very lucky. The trip was a real eye opener for me and showed me things I didn't expect.

Being western we had lots of money which I was very grateful for. We boarded at a private school (there are not many in China) and we were treated very well. Most students at the school shared a dormitory room with six people in it, whereas Kelsey and I had a whole apartment to ourselves, with our own rooms.

Language was something I really struggled with because I took a while to decipher what the people were saying. When they believed that I didn't understand them they just converted to English. That is something that I now wish I hadn't allowed people to do.

The trip was a really great success and I believe that anyone interested in going overseas with a school trip should. We got back to Adelaide the day before Christmas and we were both sad and happy. I am still in contact with a lot of the Chinese friends I made and I am very grateful for that.

*Ruth Waterman*

### Digital Education Revolution

#### Computers for Schools - Computer Deployment

Our school was identified in the first phase of the Digital Education Revolution (DER) in 2008. As a consequence we are now in the active process of rolling out over 400 new computers for use by both students and teachers. This reads easy on paper but in reality it is a mammoth task for our small group of Information Communication Technology (ICT) personnel.

42 new desktop computers have been configured to replace existing machines in specialist computer rooms. Over 250 laptop computers are currently being configured to rollout to students on purpose built laptop trolleys. The first 20 of these will go to the Resource Centre to supplement their already popular laptop loan scheme. In addition to 2 existing laptop trolleys a further 220 laptops are allocated in sets of 14 to individual faculty areas. These will soon be available for student use through their subject teachers. On top of this 85 netbooks will be deployed throughout the school. These highly portable lightweight laptops are fully operational with contemporary software and come with the convenience of 22cm screens and 9 hour batteries. We are still waiting for DECS to agree to licensing terms with APPLE before we take delivery of a further 26 iMac desktops and 44 MacBook laptops for the Arts faculty.

In addition to the physical complexities of deploying such a large amount of computer hardware safely and securely the ICT support staff are working on the "back end" of our communication structure to ensure that all users will have access to the wireless network. This is also a large and complex task especially to ensure



the integrity of the network remains secure and capable of absorbing an exponential growth in traffic. A number of Interactive Whiteboards are also being installed in specialist teaching rooms around the school.

To realise these challenging goals ICT support staff have developed prioritised timelines with the deployment of networked laptops for student use at the top of the list. Connecting staff and student personal computers to the school network is also a priority and the implementation of this facility is envisaged later in the term.

### **Teacher Training**

Whilst the hardware/software/network issues are being dealt with by the ICT support staff the school's teachers are also working hard to develop new skills and understandings to support the education use of computers in schools. Our school has taken the initiative of creating a late start for students once a week so that teachers can undertake an intensive ICT learning program when they are fresh and receptive to new concepts. Identified by staff as Learning Technologies Teacher Training Time (LT<sup>3</sup>) this period commences every Wednesday at 8.30am with teachers electing to undertake computer hardware/software training from a variety of sources. First term offerings will include MOODLE (online learning management system), interactive whiteboard and multimedia authoring. This innovative approach to ICT and teacher training is being conducted as part of a larger research project in partnership with the DECS Learning Technologies as well as with staff of the Flinders University and University of South Australia. Staff and students are working with DECS and University partners to see how the use of contemporary digital technologies can impact positively on learning outcomes for the students of today and tomorrow.

### **FAQ**

#### ***What sort of laptop computer should I buy to best support my child at school?***

*At this stage we are still developing the functionality of a wireless portal that will allow students to log on to their folders from anywhere in the school. To complete this initiative we will need to expand the wireless network which is planned for late term one. I would advise parents who are intending to buy a laptop or Netbook to wait until we can provide more information later in the term about which is the best model and specifications for student use. The DER laptops are Dell machines and the NetBooks are ACER. It is therefore likely that these brands are a sensible buy. However, each model varies in specifications and configuration so again it might be best to wait until we can provide you more detailed information.*

#### ***Can I buy a laptop computer through the school?***

*We are currently investigating processes for the purchase of laptops through a school brokered scheme. Our goal is to be 1 to 1 by the beginning of 2011- every student with a laptop or Netbook. We believe that this would necessitate a partnership between school and parents to purchase machines with a 3 year warranty and an insurance policy covering theft or damage. We will provide the*

*school community with more information as our research progresses.*

*Harry Postema and Jeremy Cogan  
on behalf of the GIHS Information Management Committee*

### **Christian Pastoral Support Update**

Welcome to 2009. This year has seen many changes to the Christian Pastoral Support Program. It is supported by the local churches and the federal government to employ a Christian Pastoral Support Worker (CPS Worker) for 30 hours per week. The CPS Worker pastorally supports students, staff and families and is a resource and referral role to different services in the community. CPS Workers also run a range of small group programs and lunch-time activities.

I have been the Christian Pastoral Support Worker for the last four years and will be leaving shortly to take maternity leave. It has been great to be able to work with the school community and I have enjoyed supporting the students and staff in various ways. I would like to welcome Julie Telfer as my replacement for the rest of the year. She has many years' experience as a youth worker and has been job sharing with me at the start of this term. She has enjoyed getting to meet the Year 8s and 9s at their camp and orientation days.

*Stacie Ellinger Christian Pastoral Support Worker*

### **Request for Host Families**

In March, August and November 2009 we will have groups of Japanese students visiting us and we need GIHS families to host and help us provide a taste of Aussie Life.

These study tours are an excellent opportunity for our students and their families to share Australian culture and learn about Japanese culture in return. They are a lot of fun for all involved!

Buddies join in activities such as the welcome lunch and the farewell dinner party at GIHS. There is a weekly homestay payment to cover full board and bus tickets are provided where needed.

Your support would be greatly appreciated. Please contact Margaret Munday on 8338 9796 or [margaret.munday@gihs.sa.edu.au](mailto:margaret.munday@gihs.sa.edu.au) if you would like to participate or have any questions.

*Lyn Hayano Assistant Principal  
International Student Program*

### **Yr 8 Camps**

Despite a week of exceptionally hot weather the camps ran smoothly and efficiently. All Year 8's spent two days and one night at Mylor during Week 2 of this term. Many of the activities were modified or adjusted to ensure maximum participation and enjoyment. The students cycled through activities such as the Flying Fox, Archery, Canoeing, Challenge Course and time in the pool. It was great to see the students developing

strong friendships with peers in their Home Group and mixing with students from other classes. The Yr 11 Peer Support students ran the evening sessions and their contribution was invaluable. I would like to thank Home Group teachers for their support and all teachers who were day visitors. Please see photos on page 9.

*Julie Humphreys Yr 8 Year Level Leader*

### Yr 8 Orientation Day

The Orientation Day encountered equally challenging weather. The day's program was rearranged within *Life Be In It* starting at 9.00 am. Students were frequently hosed down during the events and bottle water and fruit were provided. Please see photos on page 9.

*Julie Humphreys Yr 8 Year Level Leader*

### Yr 9 Orientation Day

On Thursday Week 1 the Year 9's went to Woodhouse for the Challenge Hill course and Team Building activities. Refreshed regularly with icy cold water, fruit iceblocks and a cooler gully wind, everyone had a great time working in home groups to complete different challenges and to conquer the tasks on Challenge Hill. Due to the weather students returned to school early but everyone enjoyed a successful day. Please see photos on page 9.

*Jonathan Turland Student Life Coordinator*

### National Youth Science Forum

Over the holidays Cristina Valero and I had the privilege of attending the National Youth Science Forum. It lasted 12 days and is held twice a year in Canberra. Our session was a collection of 144 motivated, well-rounded science loving people of our age and we had an amazing time. We attended labs, listened to guest speakers, and even went fossil digging. We were exposed to all different kinds of Science professionals and we got plenty of time to grill them about the 'real' world science.

The experience was an unforgettable one. We have made friends who we know we will keep in touch with, and formed a network with more than 300 members which will be a great asset in our future lives.



*Stella Crawford & Cristina Valero*

## GIHS Sport & Student Life

Starting in Week 5 our new Sports Director Craig Rainsford will be joining the staff. In the meantime, Mr Turland, Christina Sorgini, Mr Baker and Mr Williman have been working to get sports started in Term 1. This term students will be involved in Boys and Girls Tennis, Girls Volleyball and Girls Basketball during the week and Boys and Girls Badminton and Boys Cricket on Saturday mornings. Term 2/3 Sports nominations will begin in week 7 this term. See Mr Turland if you require any more information.

Student Life Activities are beginning from Week 4 with all of the clubs beginning on various days. Inter- House sport will start for both boys and girls in Week 8 after students have the opportunity to represent their houses in the School Swimming Carnival in Week 5 and the School Sports Day in Week 8. Events this year will again include International Day in Term 4 as well as Glenunga Idol, Glenunga IQ, Battle of the Bands, Dance Choreographic Awards, Checkers Competition and Inter-House Theatre Sports. We would love every student in the school to be involved in Student Life Events. See the website or see Mr Turland for more information.

*Jonathan Turland Student Life Coordinator*

### Yr 10 Melbourne Cultural Discovery Trip

The Melbourne Cultural Discovery trip will explore Parliament House, Treasury Gardens, The Aquarium, National Gallery of Victoria and Federation Square. It will include an historic Yarra River Cruise as well as visits to the MCG, China Town and the Victoria Markets.

Students and staff will depart by chartered bus from the school at 5.30am Sunday 24 May 2009 and return with Virgin Airlines the evening of Wednesday 27 May at 8.50pm. The cost to students is approx \$510 which includes all travel costs to and from Melbourne, 3 nights accommodation (located in central Melbourne, Miami Hotel), breakfast each morning, most other meals and entry into all venues.

Please contact Jonathan Turland (Tour Leader) by email [jonathan.turland@gihs.sa.edu.au](mailto:jonathan.turland@gihs.sa.edu.au) for more information as soon as possible.

*Jonathan Turland Student Life Coordinator*

### Student Congratulations

#### GERMAN LANGUAGE COMPETITION

Seven students from Glenunga International High School have excelled in the 2009 SA Schützenfest German Language Competition. The topic of the competition was *Getting to Know Schleswig-Holstein* and students were required to design a poster dealing with this theme. The criteria for judging the entries included content, accuracy of German language, level of difficulty of language and presentation.

#### Yr 8

Prescient Kannampuzha	2 <sup>nd</sup> prize
Raphaela Wiget	3 <sup>rd</sup> prize



### Yr 9

Barbara Solomos	1 <sup>st</sup> prize
Ashley Sroka	2 <sup>nd</sup> prize
Elise Chichton	3 <sup>rd</sup> prize

### Open Section (Yr 10 – 12)

Stella Naylor	1 <sup>st</sup> prize
Adam Malavazos	2 <sup>nd</sup> prize



All of the entries from these students were outstanding, displaying creativity, originality, excellent knowledge of the topic and excellent German language skills.

The students will be presented with their prizes at a special ceremony to be held at the German Club of SA on Saturday 21 February. I would like to congratulate these students in particular as well as all the other students who entered the competition. Gratuliere!

*Robert Kretschmer German Teacher*

### 2009 AUSTRALIAN JUNIOR NATIONAL ARCHERY CHAMPIONSHIPS JAN 2 – 9 2009

Of the 93 representatives Australia wide who competed in the Junior National Archery Championships three were GIHS students! SA scored very well coming 4<sup>th</sup> in the medal tally overall. Congratulations go to the following students

#### Ella Smith (Cadel Girls Recurve)

4<sup>th</sup> in Clout / 3<sup>rd</sup> in Field / 5<sup>th</sup> in Target

#### Vidar Son (Cadet Boys Recurve)

3<sup>rd</sup> in Clout / 6<sup>th</sup> in Field / 8<sup>th</sup> in Target

#### Sam Wallace (Junior Boys Barebow Recurve)

2<sup>nd</sup> in Clout / 1<sup>st</sup> in Field / 1<sup>st</sup> in Target

If you would like to know more about Archery contact Archery Australia [www.archery.org.au](http://www.archery.org.au)

### BHP BILLITON SCIENCE AWARD

Congratulations go to Dylan Peukert who was a Semi Finalist in the BHP Billiton Science Awards for his Saving Waster in the Garden entry. Congratulations Dylan!

### Victorian Bushfires

Our Year 9 students are working towards sending personal care packs across to the Victorian Bushfire families that have been left homeless by both the recent and ongoing bush fires. There are over 7,000 people left homeless so if we help out just some of the people, that would be a great effort by the students.

We are gathering **mini** toiletries such as shampoo, conditioner and toothpaste that can fit into a “Snap lock” sandwich bag. We hope you will be able give us a hand by purchasing either part or full packs. Ideally we are after shampoo, conditioner and shower gel (up to 100ml), small toothpaste (45g), 1 tissue purse pack, a toothbrush (either adult or child) in a snap lock bag (sandwich size). We are happy to package whatever we receive so feel free to donate just a mini shampoo or a toothbrush – every bit helps.

Students are asked to bring in their donated goods and drop them off in the collection boxes located near student services. It would be appreciated if these items are received as soon as possible as we plan to sort, pack and send to Victoria as a matter of urgency.

*Jonathan Turland Yr 9 Year Level Leader*

### Tour Down Under

Early this year a number of teachers, (Mr. Grantham, Ms. Ayling, Mr. Williman, Mr. Postema, Mr. Mewett, Mr. Grierson and Mr Quorn-Smith) participated in the Tour Down Under community challenge. The challenge involved cycling anywhere between 90 and 155 kilometres. It was an excellent personal achievement by all participants and most did 155 kms. I think it was a fine example of what can be done with some dedicated training, individual discipline and a bit of old fashioned guts and determination. Hopefully next year we can organise a body of Glenunga students to gather together and tackle the roads of Adelaide and beyond in what promises to be an equally challenging and rewarding event.



*Picture - Harry Postema, Andy Mewett and Ken Grierson are all smiles after "the big ride"*



*We take this opportunity to thank Steve McCawley from SlingShot Studios for the new photo of Wendy! Steve's studio is situated at 114 Gilles Street Adelaide.*



Steve McCawley  
E [steve@slingshotstudios.com.au](mailto:steve@slingshotstudios.com.au)  
T 08 82326078 M 0412650090  
[slingshotstudios.com.au](http://slingshotstudios.com.au)





## *Yr 8 Mylor Camp*



## *Yr 8 Orientation Day*



## *Yr 9 Orientation Day*





L'Estrange Street, Glenunga  
South Australia 5064

T +61 8 8379 5629  
F +61 8 8338 2518  
E [glenunga@gihs.sa.edu.au](mailto:glenunga@gihs.sa.edu.au)  
[www.gihs.sa.edu.au](http://www.gihs.sa.edu.au)

Principal  
Ms W Johnson

A Special Interest School for Students  
with High Intellectual Potential

An International Baccalaureate  
World School

An Internationally Accredited School  
Provider No. 00018A



## GIHS UNIFORM SHOP

Welcome back, and welcome to all our new students. Hope your holidays were enjoyable and that you are all looking forward to another new year.

Listed below are our shop hours at GIHS for your information.

<b>Monday and Friday</b>	<b>8:15 to 9:00am</b>
<b>Wednesday</b>	<b>12:15 to 12:55pm</b>

Our prices lists/order forms are available from the Uniform Shop and Student Services. If you need to contact me out of shop hours, my mobile number available on the net under the Uniform Shop listing.

## OUR SPECIALS

We have a few of the Devon Girls Hip Pants still available at the reduced price of **\$18**. Also a few girls long sleeve and short sleeve. Not all sizes are available for these specials.

Any questions please don't hesitate to contact me.

**Devon Clothing - 230 Brighton Road, Somerton  
Park 5044  
8294 2022**

*Judy Worrall Shop Manager, Devon Clothing*

## BRANDMODE OPENING TIMES for GIHS – (School Sports Uniform)

Listed below are our GIHS shop hours for your information.

<b>Friday</b>	<b>8:15 to 9:00am</b>
---------------	-----------------------

**Shop also located at:  
154 Halifax Street, Adelaide 5000  
8232 3331**

Mon – Fri: 9.00am – 5.00pm  
Saturdays: 9.00am – 12.30pm

## Student Absentees

SMS - by 9.30 on the morning of the absence stating:

1. SURNAME OF STUDENT
2. FIRST NAME
3. HOME GROUP
4. REASON FOR ABSENCE eg Illness, Family

The number to **SMS** absences is  
**0416 907 022**

The direct **absentee line** is also available  
phone **8338 9726**



## Are you interested in studying in 2009

**Providing SACE Subjects and  
Vocational Certificates to Adult  
Learners in SA**

*We work with you so you can successfully  
manage a study program and achieve your goals  
while maintaining your family/ work  
commitments*

We are able to provide access to over 90  
Stage 1 & Stage 2 subjects

*Study part time or full time*

**For enrolment or subject details  
please phone 1800 882 328  
[www.openaccess.edu.au](http://www.openaccess.edu.au)**